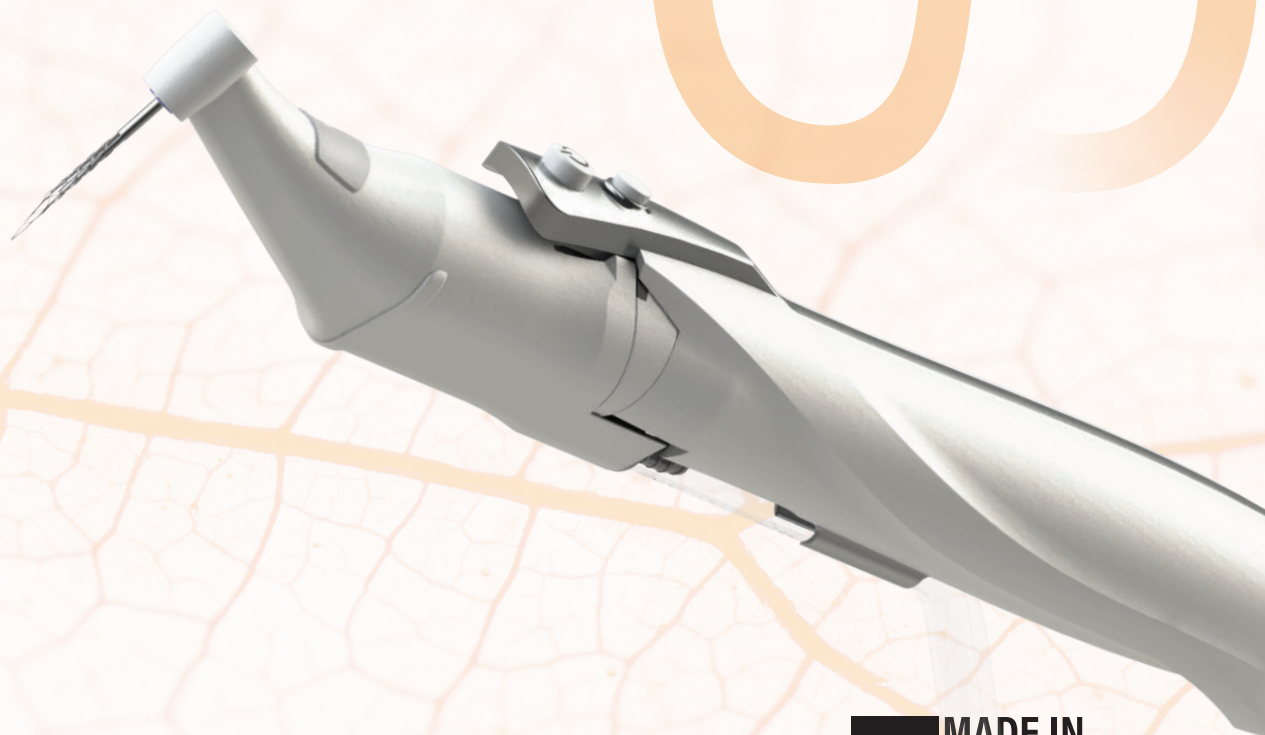




SAF

INFINITUM



Enjoy Endo

 **MADE IN GERMANY**

SAF INFINITUM, compatible with common ISO-type micromotors, will provide you an enjoyable endodontic experience and the satisfaction of achieving the BEST cleaning results you have experienced!

Wireless transmitter

- Compatible with standard ISO-type micromotors.
- Measuring the rotation speed and sending a Bluetooth signal to the main device.
- Self-rechargeable by the motor operation.

Disposable handpiece

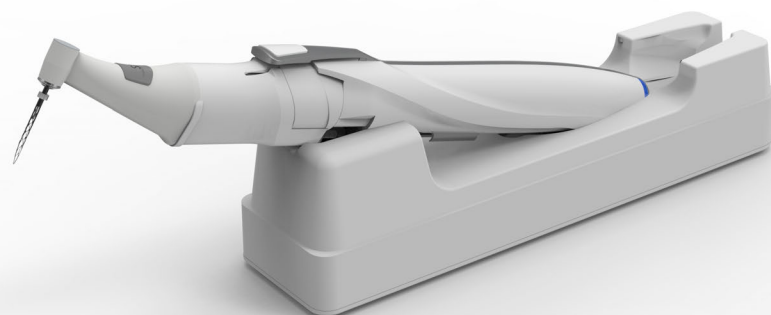
- Revolutionary disposable handpiece, assuring high quality and efficiency, while eliminating the need to lubricate and sterilize.
- Irrigation and suction through the handpiece, yet the small head size provides a wide field of view.
- Recyclable, to promote sustainability.



Everything you need to
Enjoy Endo

Self-Adjusting File (SAF)

- Three diameters (1.5mm, 2.0mm, 3.0mm) and three lengths variety (21 / 25 / 31 mm).
- Direct irrigant injection into the file assures efficient exchange of the solution.
- Suction through the shank removes the residual irrigant, carrying the debris away instantly.



Cordless motor

- An optional rechargeable cordless motor, well-balanced, for the comfort of the user.



Dual-Rinse irrigation

- Designated irrigant that adds chelating abilities to sodium hypochlorite, to provide efficiency to remove organic and inorganic debris at once, achieving extreme cleanliness and disinfection, while shortening treatment time.

Smart pump main device

- 7" touch screen to control the flow of the irrigation and suction.
- Detachable irrigation and suction pumps and containers.
- Supervision over the motor's operation speed.
- Maintenance control.
- Educational system, with instructions and videos.



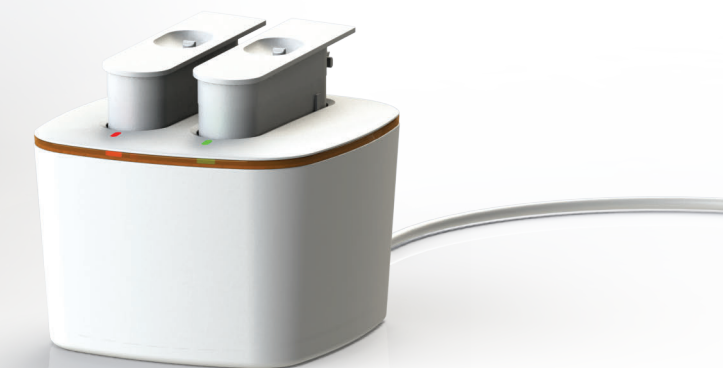
Instructional kit

- Instructional videos, with animations, serving as your personal workshop to learn how to use SAF INFINITUM.
- Special 3D-printed replicas of real teeth, to practice the use of SAF INFINITUM.
- Instruments to practice.



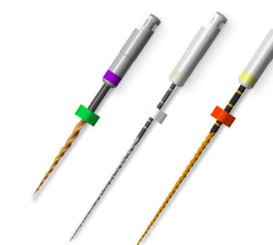
Rechargeable batteries

- Two batteries to assure you are ready to work at any time.



Wide variety of accessories

- Glidepath controlled-memory heat-treated rotary NiTi files, to assure safe glidepath preparation for very narrow canals.
- Guttapercha cones and paper points.
- Bioceramic sealer.



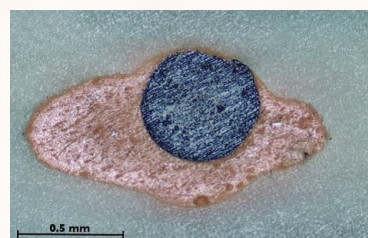
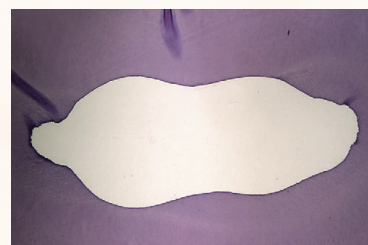
Main clinical benefits

The Self-Adjusting File (SAF) is a hollow endodontic file that compresses to fit any root canal morphology, with quick vertical scrubbing motions that conduct ideal minimally-invasive shaping within 2 minutes of work.

Continuous irrigation and built-in sonic agitation, simultaneously during shaping, create a synergistic effect and prevent packing of debris and extrusion of debris. Continuous exchange of SAF INFINITUM's advanced Dual-Rinse® solution removes both organic and inorganic debris, leading to a level of cleanliness you have never experienced before.

Easy 3D obturation, by any common technique, is easy to achieve thanks to the high level of cleaning, either in primary treatment or in re-treatment.

Superior safety is achieved by the SAF's structure and mode of operation, overcoming common issues of conventional endodontic instruments, such as file separation, dentinal fractures and micro-cracks and irrigant accidents.



Notes
